

Support tailored
to your patient's
journey

About EpioxaCareConnect™

At Glaukos, we share your commitment to preserving vision. Our team is here to support your practice and patients every step of the Epioxa™ cross-linking treatment journey.

If your patient is enrolled and eligible, the program offers:

Coverage Assistance through the EpioxaCareConnect™ Portal

- Benefits investigation and prior authorization requirements
- Estimated patient out-of-pocket (OOP) costs and determination of financial assistance eligibility
- Support through prior authorizations/pre-determinations, appeals, and peer-to-peer review*

*Accurate completion of payer forms and documentation is the responsibility of the prescriber and office staff. Coverage cannot be guaranteed.

Dedicated Patient Support via Patient Access Liaisons (PALs)

- The PAL team offers personalized, non-clinical education to help set expectations and guide patients through each step of the treatment journey
- PALs assist patients in navigating insurance coverage, understanding out-of-pocket costs, and accessing available financial assistance programs
- Ongoing engagement ensures patients receive continued support after first-eye treatment and coordination for their second-eye procedure (if necessary), promoting a seamless, positive experience

Access & Reimbursement Support

- Reimbursement Liaisons (RLs) are your field-based expert dedicated to your practice
- RLs provide guidance and support in interpreting payer coverage policy, documentation criteria, authorization denial support, and claim submission
- Their expertise supports your staff to resolve coverage challenges efficiently and confidently

Additional Resources

Resources Available on Our Website:

- **Billing & Coding Tools:** Guides, template letters, and payer policy information to support reimbursement needs
- **Product Distribution Details:** Information on ordering and distribution channels
- **Patient Education Materials:** Patient-friendly resources on coverage, insurance processes, and financial assistance options

\$0
Co-Pay

Financial Support

Epioxa Copay Program for commercially insured patients:

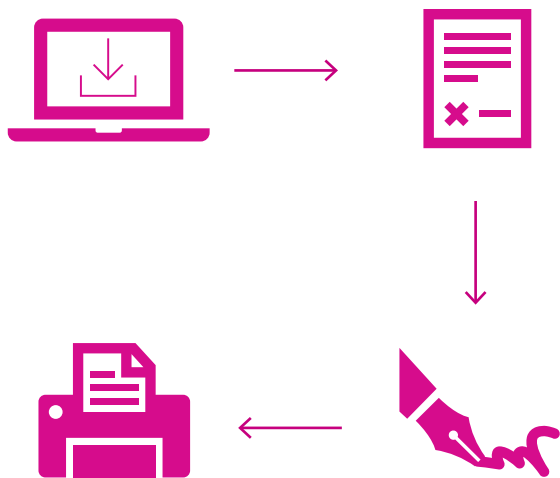
Patients with commercial insurance may be eligible to pay as little as \$0 out of pocket for the cost of Epioxa and the cross-linking procedure through our Epioxa Copay Program.**

**Copay support is available for commercially insured eligible patients only. Additional restrictions may apply. Subject to change; for full terms and conditions, visit hcp.epioxacareconnect.com

Enrolling your Patients in EpioxaCareConnect™

Getting your patients started is simple. Once your practice is enrolled, complete and submit the patient enrollment through these easy steps.

Steps to submit the Patient Enrollment Form :



1. Download the Patient Enrollment Form from epioxa.com
2. Complete all required prescriber, prescription, and patient information
3. Obtain a wet (handwritten) HCP signature
4. Fax the completed form to **1-800-839-6276**



Information to have ready

To avoid delays, gather the following details before you begin the enrollment process:

- **Patient information** (full name, DOB, address, and household income if applying for financial assistance)
- **Patient health plan information**
- **Your prescriber and site** of care information
- **Clinical information** supporting cross-linking treatment with Epioxa, including
 - ICD-10 code for keratoconus
 - Laterality of procedure
 - Prior management
- **Preferred product acquisition channel** (buy & bill vs. specialty pharmacy)

Meet Your EpioxaCareConnect™ Team

Support designed with your practice and patients in mind!

Managing keratoconus can be complex. EpioxaCareConnect simplifies the process with a dedicated team that partners with your office to streamline access and logistics, so patients can begin cross-linking treatment without delay.

Learn about our dedicated team members



Patient Access Liaisons

Each enrolled patient is paired with a dedicated Patient Access Liaison (PAL).

- The PAL serves as a single point of contact for non-clinical support
- Aids with logistical questions
- Guides patients through insurance and access processes



Reimbursement Liaisons

Glaukos Reimbursement Liaisons are dedicated partners in helping your practice navigate the complex world of access and reimbursement.

- Review payer policies to help your team understand coverage requirements
- Clarify documentation needs and claim submission processes
- Provide education and guidance on appropriate coding and billing
- Offer support for claim submissions and appeals
- Help resolve coverage challenges efficiently to support timely patient access



Site of Care Team

Partners with outpatient facilities and health system leaders to establish and expand treatment locations offering epithelium-on, oxygen-enriched crosslinking therapy with Epioxa™.

- Oversees site onboarding and operational readiness
- Ensures each site is prepared for treatment initiation
- Expands treatment availability to enhance the patient experience from a macro or business perspective to reduce barriers to timely care



Specialty Pharmacy & Logistics Team

Coordinates product dispensing and shipping directly to the site of care.

- Supports prior authorizations, appeals, and patient cost share collection for product dispensed via specialty pharmacy
- Streamlines access to therapy through dedicated logistics support
- Helps reduce financial and inventory risks commonly associated with the buy-and-bill model



EpioxaCareConnect™

EpioxaCareConnect simplifies administrative processes for your practice by verifying insurance coverage, identifying payer-specific requirements, and guiding next steps, helping your patients begin Epioxa™ cross-linking treatment without unnecessary delays.



Benefits Investigation

- Comprehensive review of the patient's insurance coverage for Epioxa cross-linking treatment
- Clear, timely summary of estimated patient out-of-pocket and financial assistance eligibility



Prior Authorization (PA) Assistance

- Identify prior authorization requirements and outline payer-specific criteria
- Assist with PA submission and provide ongoing tracking to help ensure timely approval*

*Accurate completion of payer forms and documentation is the responsibility of the prescriber and office staff. Coverage cannot be guaranteed.

Appeals Support

If coverage is denied, patients may be eligible for an appeal:

- EpioxaCareConnect provides guidance on the process, including peer-to-peer review requirements
- Payer timeline and requirements*



Resources



Visit epioxa.com for access to downloadable tools to support you during the insurance process, including tips on navigating letters of medical necessity, appeals, and other processes.



For an Epioxa-specific reimbursement guide or for hands-on support, contact your Glaukos Reimbursement Liaison or email us at marketaccess@glaukos.com



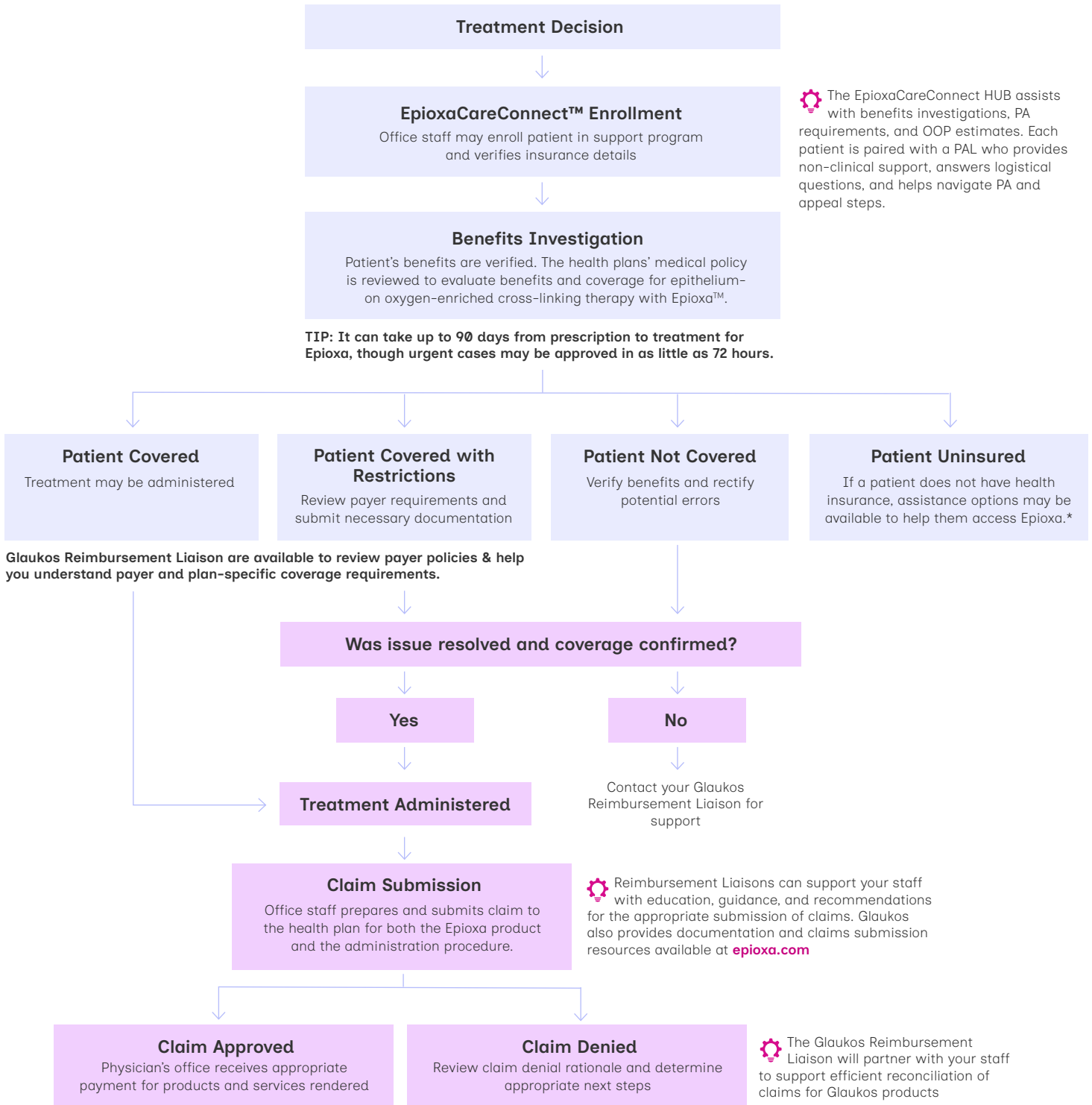
Connect to EpioxaCareConnect™

Phone 1-855-5-EPIOXA

Email: marketaccess@glaukos.com

The Access & Reimbursement Journey

Glaukos is committed to supporting you and your patients from prescription to payment.



For an Epioxa-specific reimbursement guide or for hands-on support contact your Glaukos Reimbursement Liaison or email us at marketaccess@glaukos.com

*For patients with no prescription drug coverage, Glaukos can provide information to you and your patient regarding programs that may be able to provide financial support. Glaukos cannot guarantee that a patient will receive access.

Disclaimer: The accurate completion of coverage- or reimbursement-related documentation is the responsibility of the healthcare provider and patient. Glaukos makes no guarantee regarding reimbursement for any service or item.

Specialty Pharmacy

When the specialty pharmacy (SP) channel is used for Epioxa™, the SP coordinates product dispensing and logistics to minimize administrative burden for your office.



What is a Specialty Pharmacy?

A specialty pharmacy (SP) is an outside company that provides specialty pharmaceuticals. These products may have special handling and inventory control.



What are the Key Benefits of a Specialty Pharmacy?

The SP assumes the financial risk for the drug and is responsible for seeking coverage and reimbursement from insurance and the patient.

Understanding Differences Between Buy-and-Bill and Specialty Pharmacy

	Buy and Bill	Specialty Pharmacy
Payer	Most payers allow Buy and Bill	Commercial payers may allow SP, Medicare FFS does not
Insurance Authorization	The site of care is responsible for obtaining any required PAs for the medication and procedure	Provider obtains PA for the procedure; SP obtains PA for the product
Ordering & Shipment	Provider purchases Epioxa directly from Glaukos, who ships the product to the site of care	Provider sends a prescription form to the SP with patient insurance information; SP confirms order with patient and site of care
Billing & Reimbursement	Provider submits a claim for both the medication and procedure	SP bills patient's insurance and for the medication. Provider bills only for the procedure, including facility and professional fees
Patient Cost Share	Provider is responsible for collecting patient cost-share for the procedure and product	Provider collects the patient cost-sharing for the procedure only; SP collects patient cost-share for the medication

Information on Specialty Pharmacy ordering and dispensing processes will be available in an upcoming version of this guide. For patient-specific acquisition support, enroll patients in EpioxaCareConnect™.

Indication and Important Safety Information

INDICATIONS AND USAGE

EPIOXA™ HD (riboflavin 5'-phosphate ophthalmic solution) 0.239% and EPIOXA™ (riboflavin 5'-phosphate ophthalmic solution) 0.177% are photoenhancers indicated for use in epithelium-on corneal collagen cross-linking for the treatment of keratoconus in adults and pediatric patients aged 13 years and older, in conjunction with the O₂n™ System and the Boost Goggles®.

IMPORTANT SAFETY INFORMATION

Contraindications

EPIOXA™ HD and EPIOXA™ are contraindicated in patients with known hypersensitivity to benzalkonium chloride (BAC) or any ingredients in EPIOXA HD and EPIOXA. Epithelium-on corneal collagen cross-linking is contraindicated in aphakic and pseudophakic patients without a UV-blocking intraocular lens.

Warnings and Precautions

Corneal collagen cross-linking should be used with caution in patients with a history of herpetic keratitis due to the potential for reactivation of herpes keratitis.

Adverse Reactions

The most common adverse reaction was conjunctival hyperaemia (31%). Other adverse reactions, occurring in 5% to 25% of eyes included: corneal opacity (haze), photophobia, punctate keratitis, eye pain, eye irritation, increased lacrimation, corneal epithelium defect, eyelid oedema, corneal striae, visual acuity reduced, dry eye, and anterior chamber flare.

Dosage and Administration

EPIOXA HD and EPIOXA are for topical ophthalmic use. NOT for injection or intraocular use.

EPIOXA HD and EPIOXA are supplied in single-dose syringes. Discard opened syringes after use.

EPIOXA HD and EPIOXA are for use with the O₂n System and Boost Goggles only.

Refer to the O₂n System Operator's Manual and Boost Goggles User Guide for device instructions.

Please see full Prescribing Information for EPIOXA HD and EPIOXA at www.Epioxa.com.

You are encouraged to report all side effects to the FDA. Visit www.fda.gov/medwatch, or call 1-800-FDA-1088. You may also call Glaukos at 1-888-404-1644.

Disclaimer: Glaukos provides this guide for informational purposes only and it is subject to change without notice. This guide is not an affirmative instruction as to which codes and modifiers to use for a particular service, supply, procedure, or treatment and does not constitute advice regarding coding, coverage, or payment for Glaukos products. It is the responsibility of providers, physicians, and suppliers to determine and submit appropriate codes, charges, and modifiers for products, services, supplies, procedures, or treatment furnished or rendered. Providers, physicians, and suppliers should contact their third-party payers for specific and current information on their coding, coverage, and payment policies. For further detailed product information, including indications for use, contraindications, effects, precautions, and warnings, please consult the product's Instructions for Use (IFU) or prescribing information (PI) prior to use. The information provided herein is without any other warranty or guarantee of any kind, expressed or implied, as to completeness, accuracy, or otherwise.